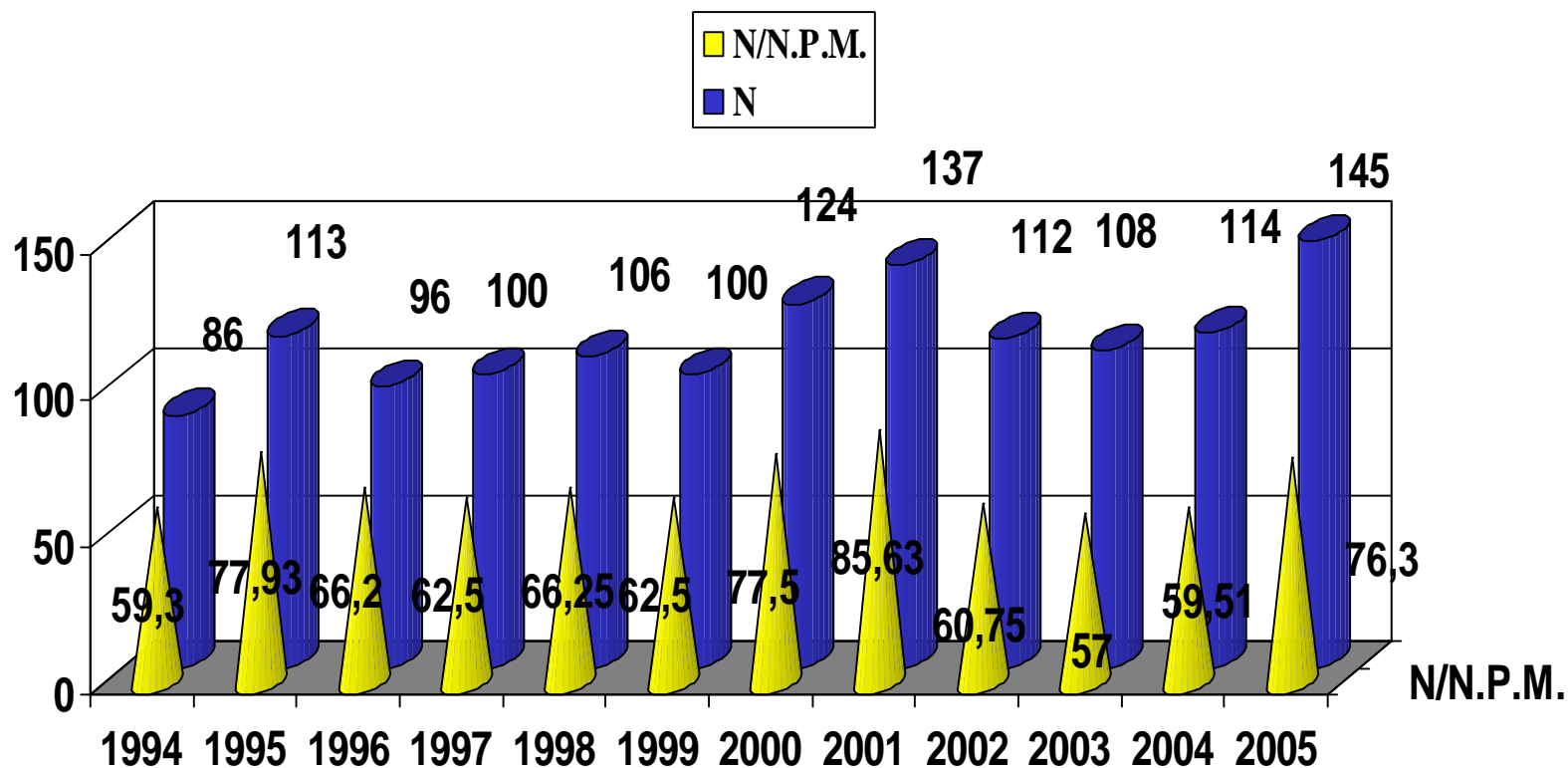
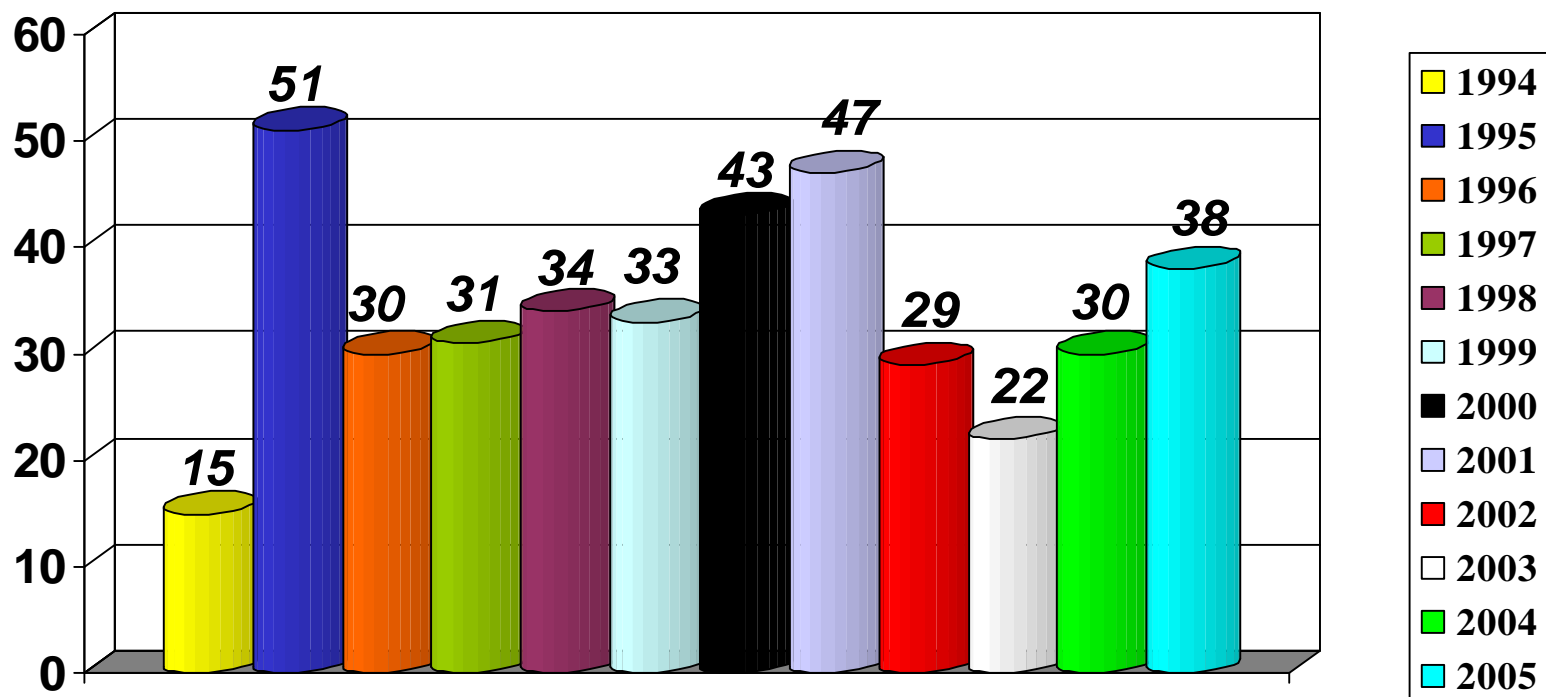


# *“Actividad global de donación y trasplantes en Canarias 2005”*

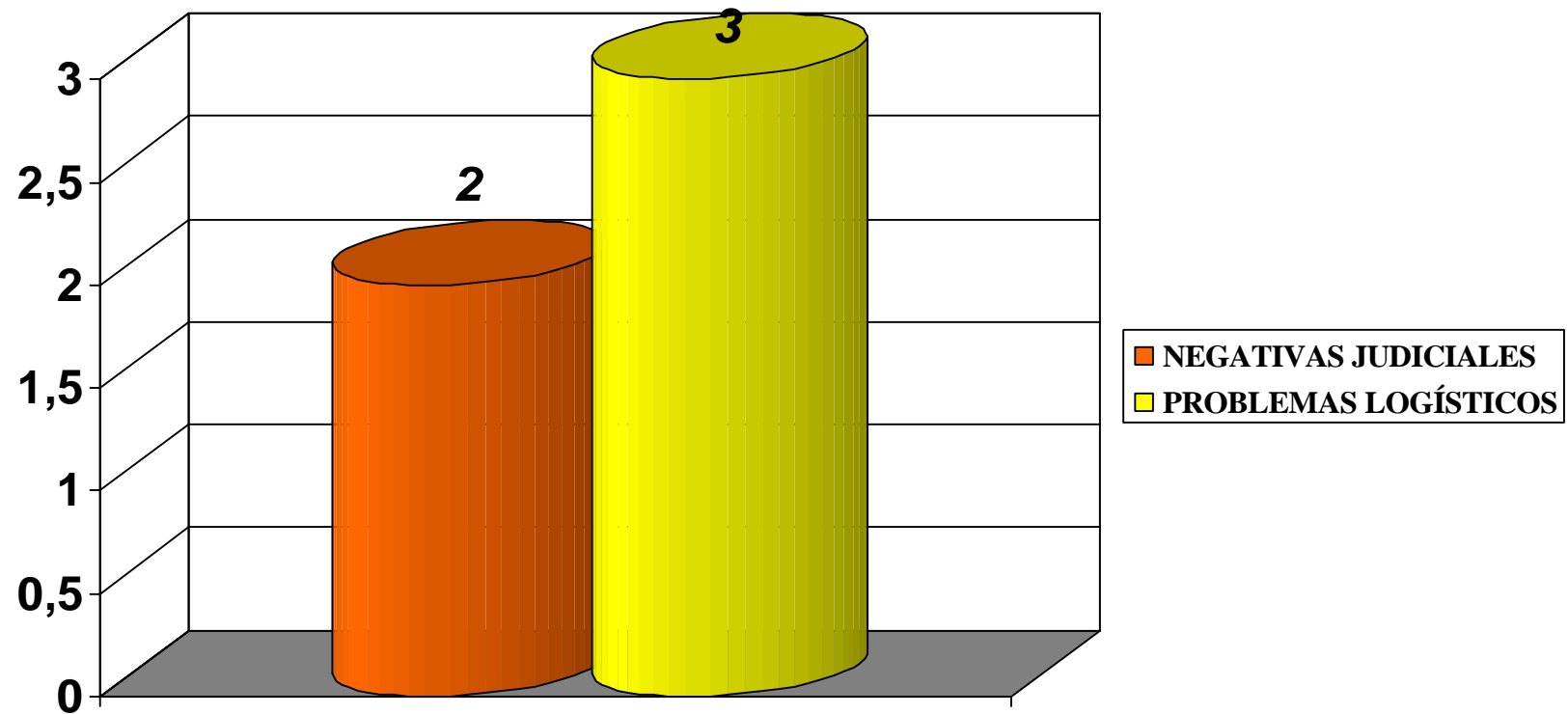
# Evolución Muertes Encefálicas Detectadas 1994 - 2005



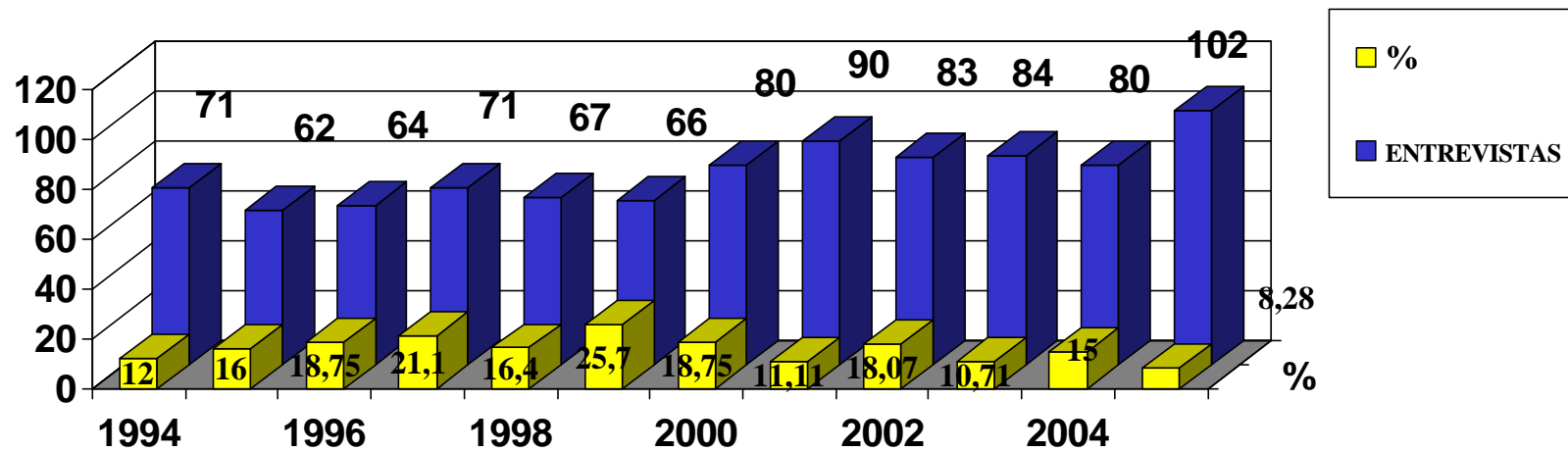
# Evolución Contraindicaciones Médicas 1994 - 2005



# Negativas judiciales Problemas logísticos 2005



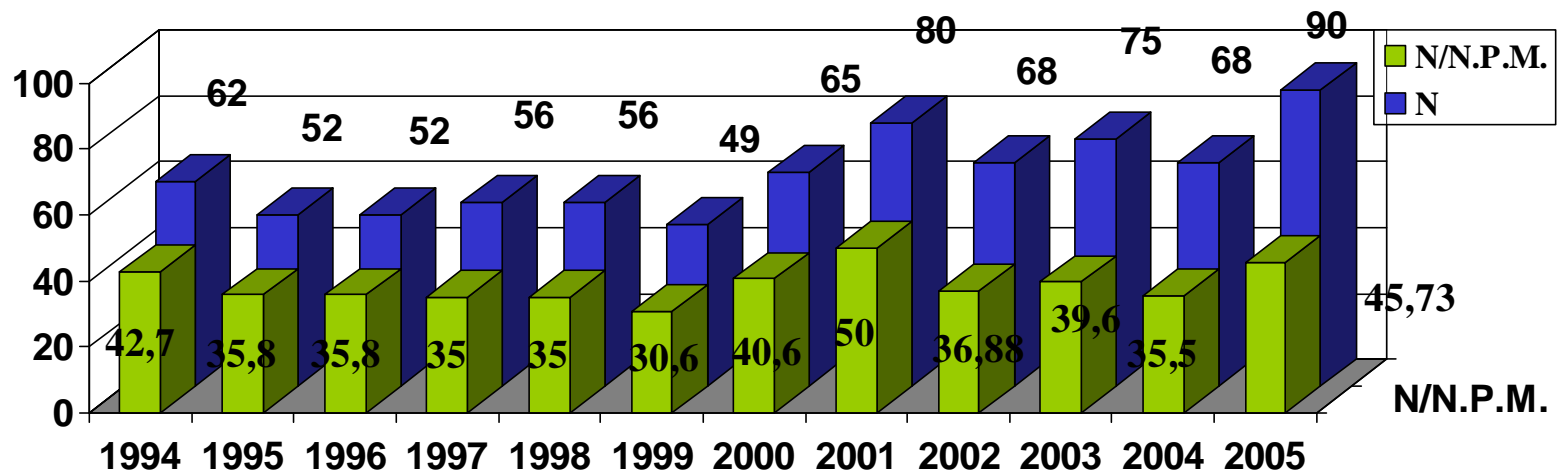
# Evolución Negativas Familiares 1994 - 2005



$\bar{X}$  Nacional 2005= 16,7%

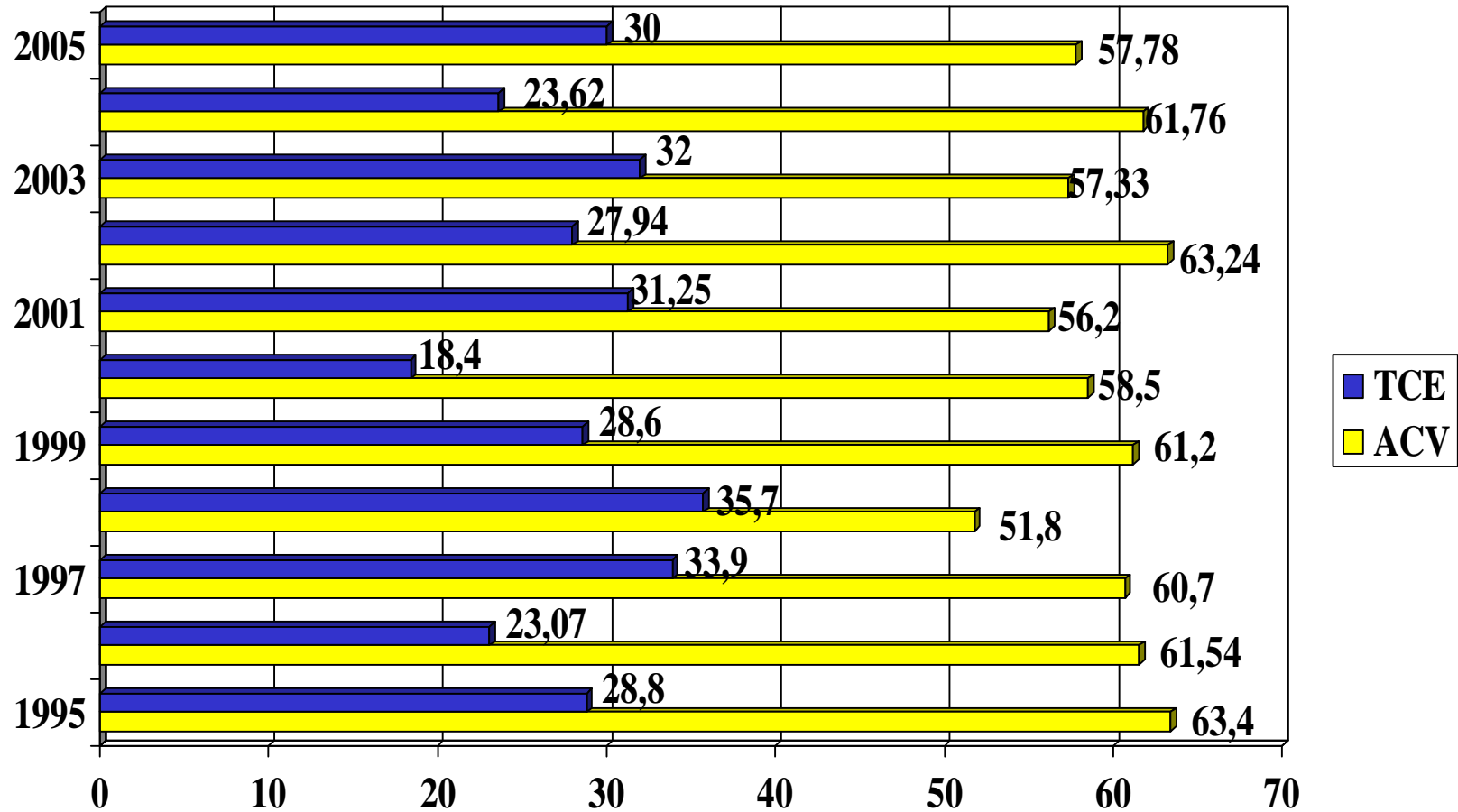
# Evolución Donantes Efectivos 1994 - 2005

X Nacional 2005= 35/pmp

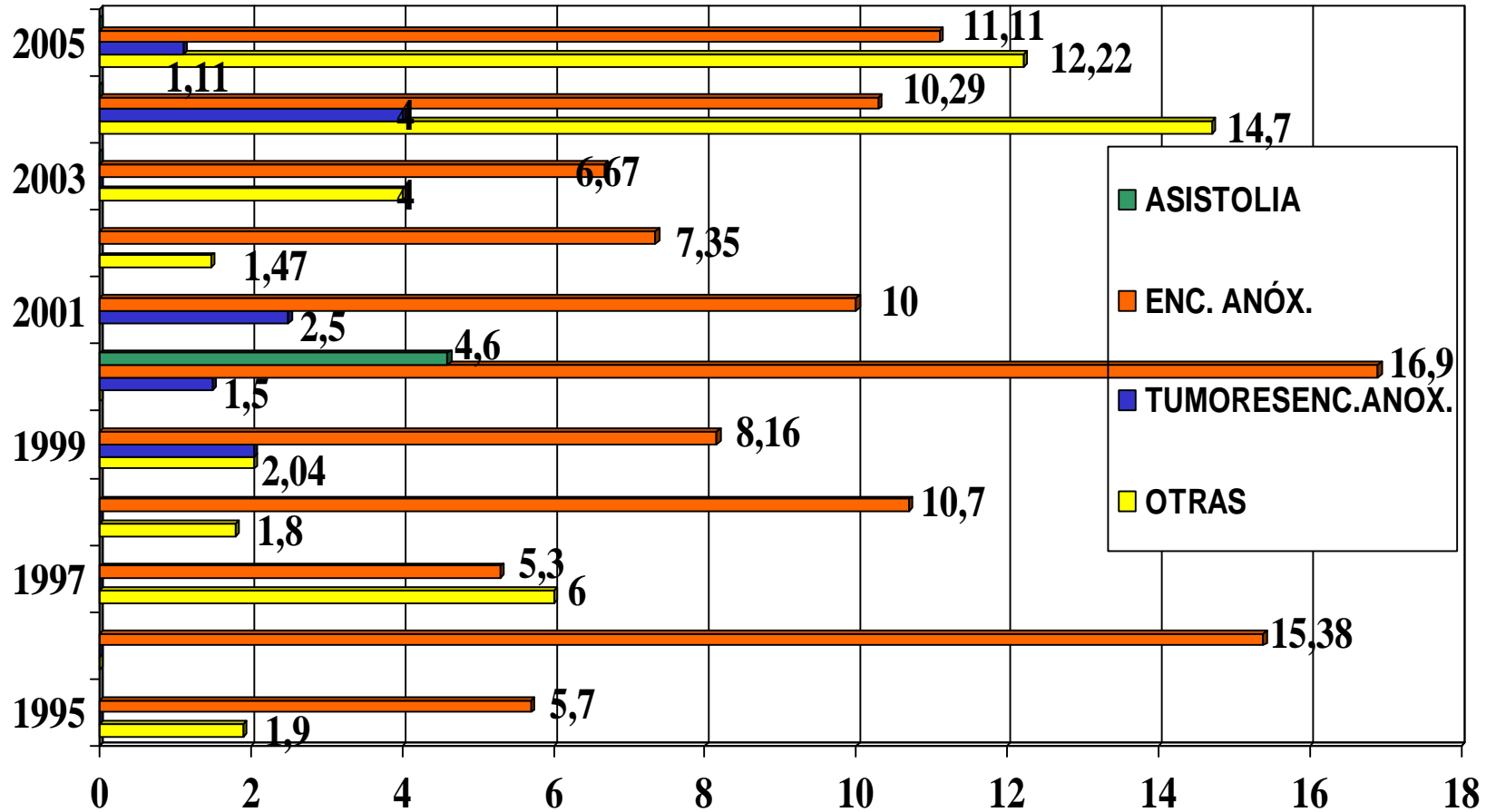


Tasa de efectividad (2005):	64,7%
Extracciones M.O.:	70,0%
Extracciones Renales:	23,3%
Extracciones Hepáticas:	6,7%

# Causa de fallecimiento de los donantes 1995-2005 (I)

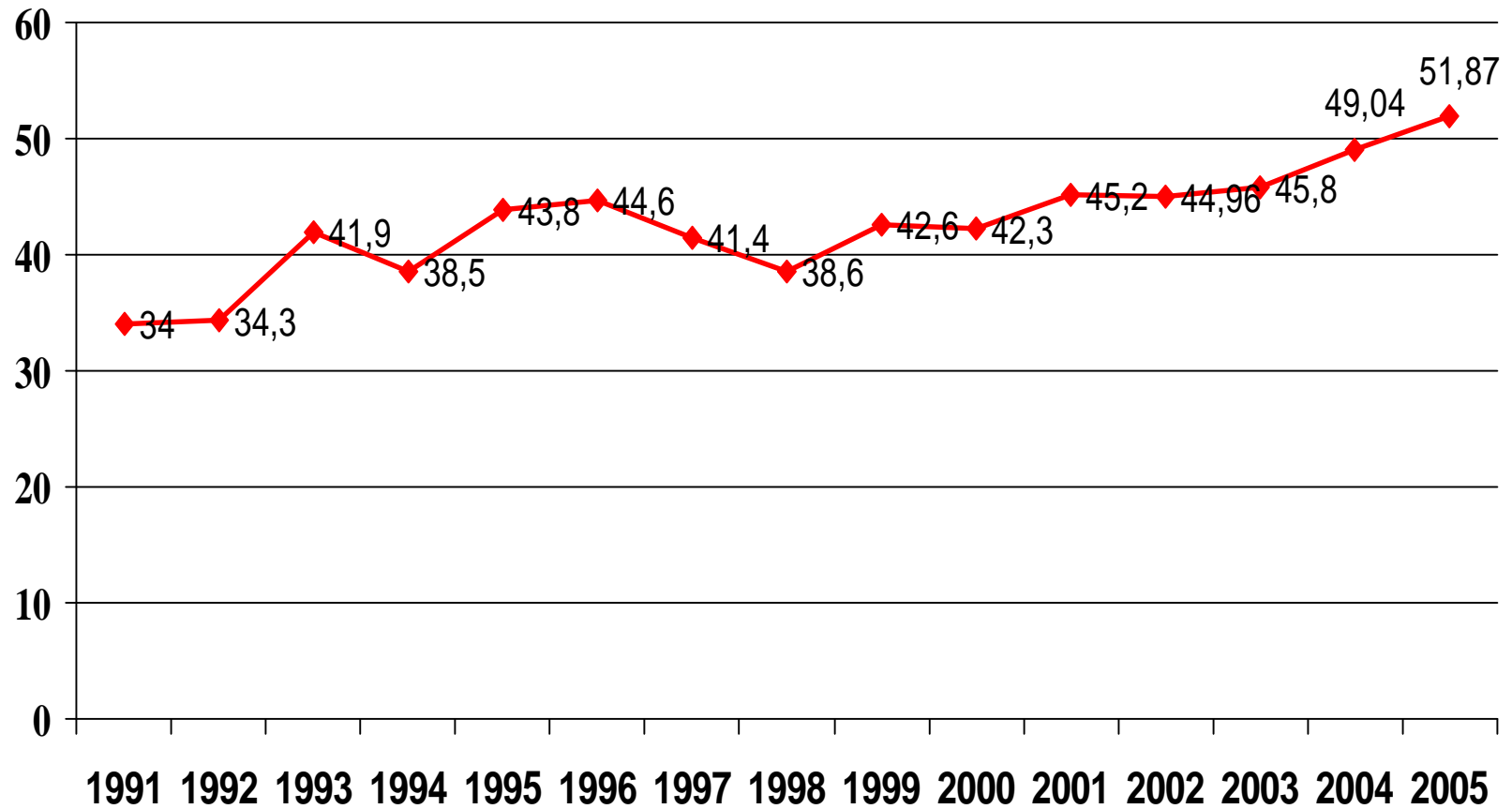


# Causa de fallecimiento de los donantes 1995-2005(II)



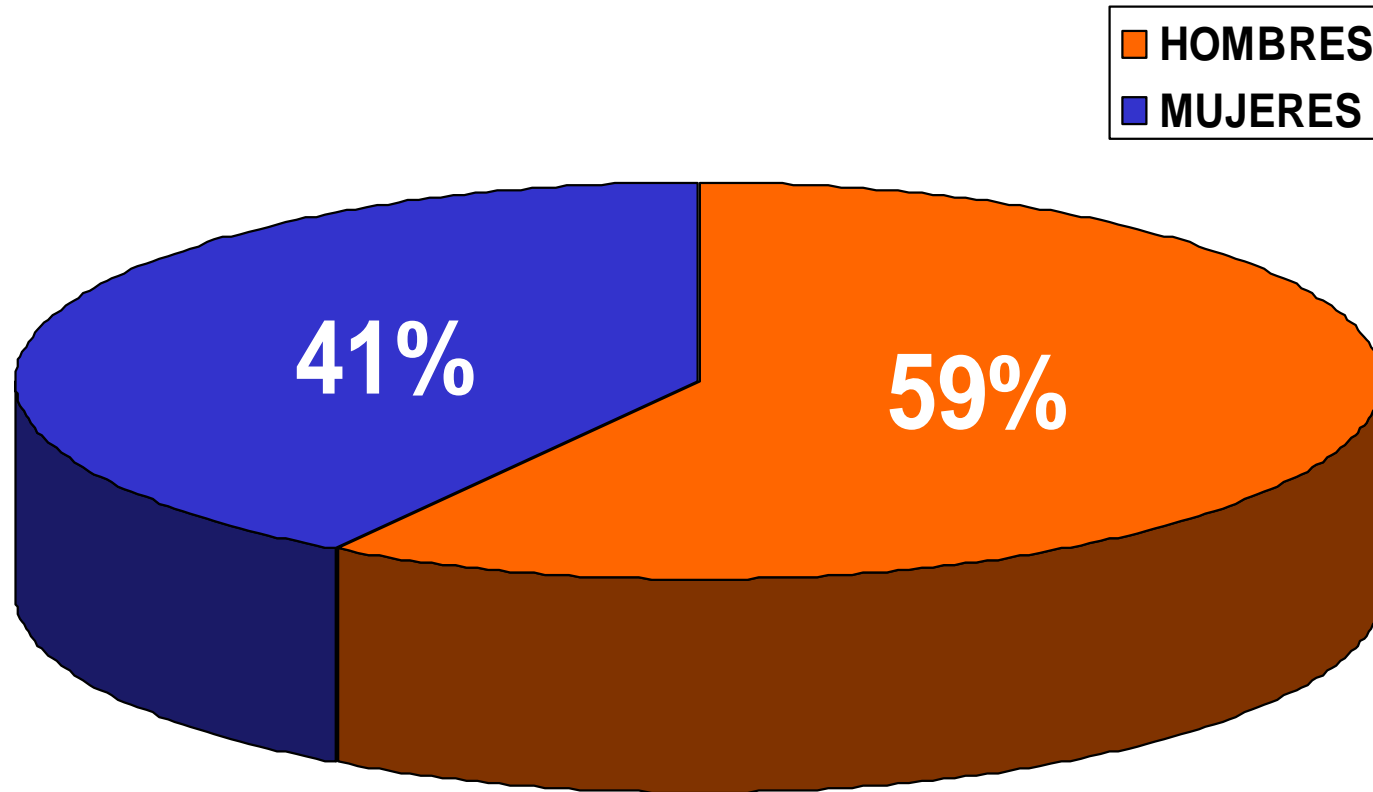


# Evolución edad media donantes efectivos 1991-2005

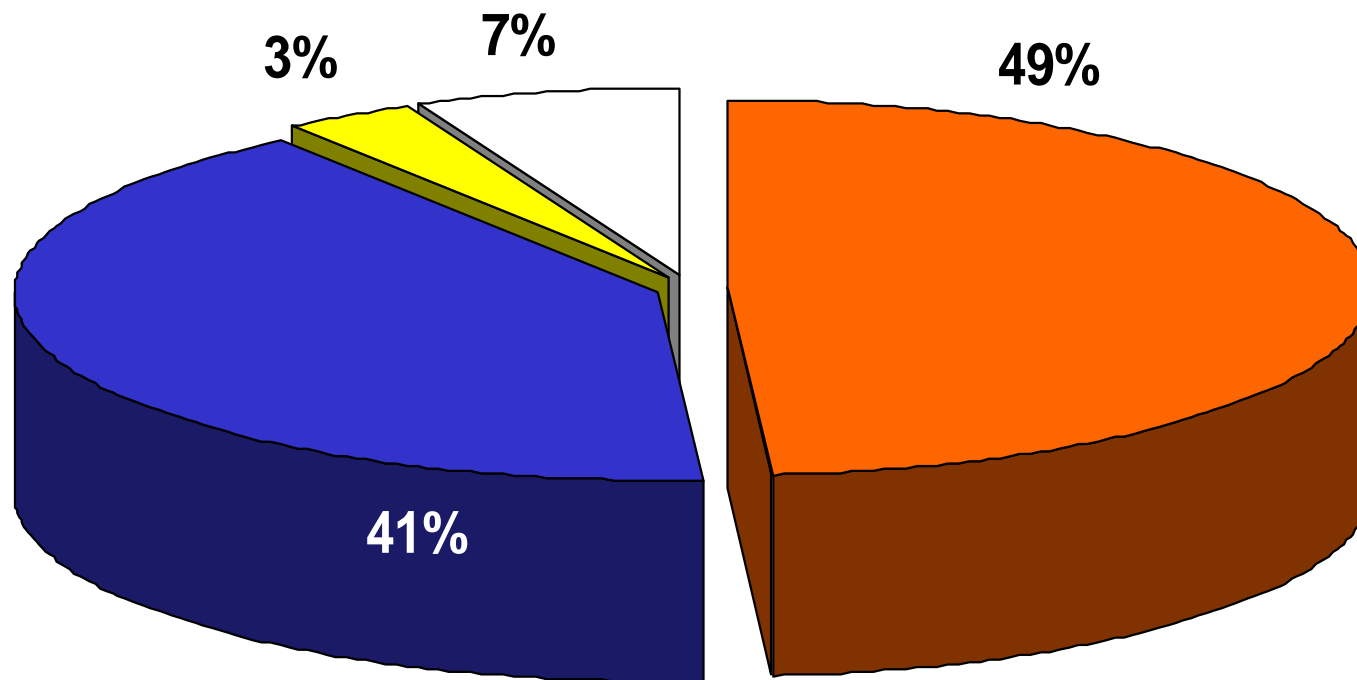
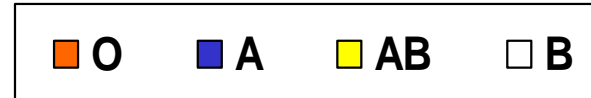


Me 2005= 57 años

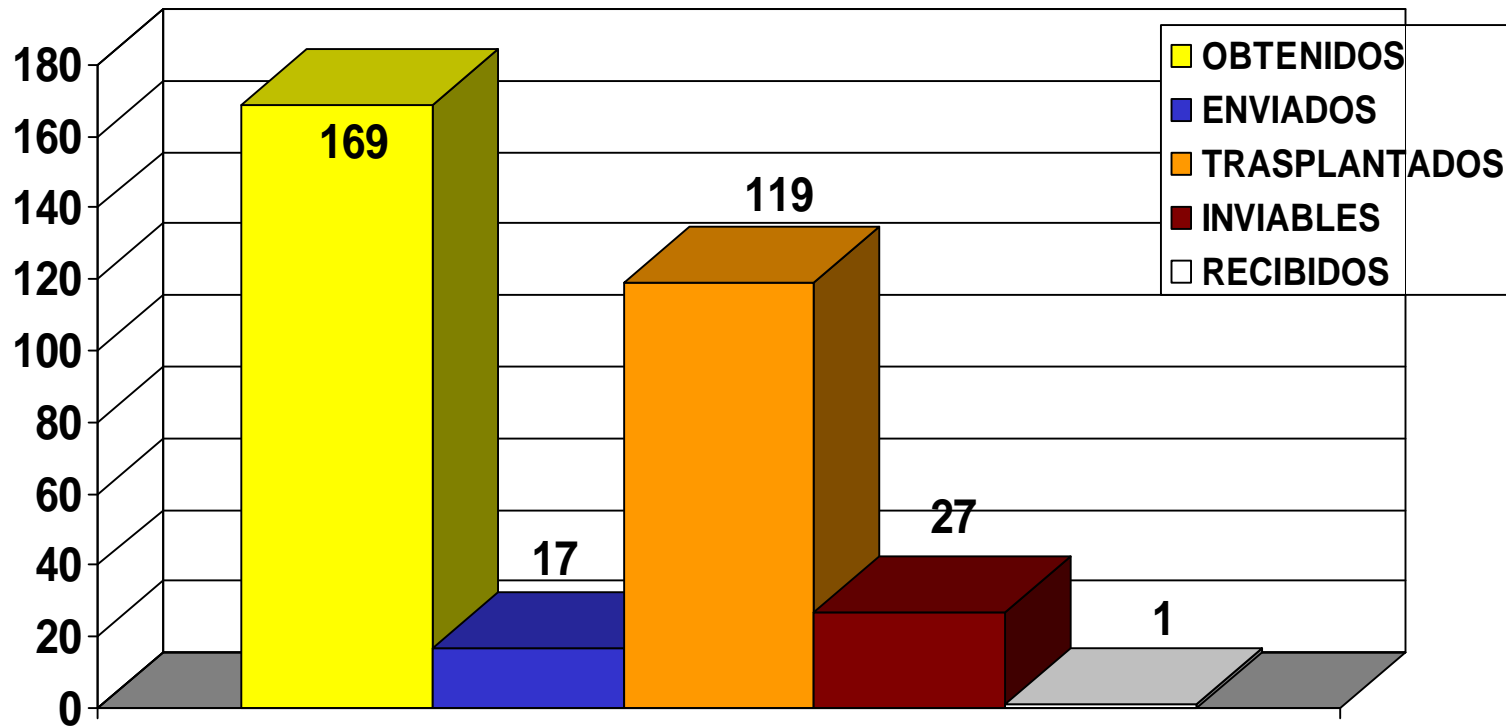
# Sexo de los donantes



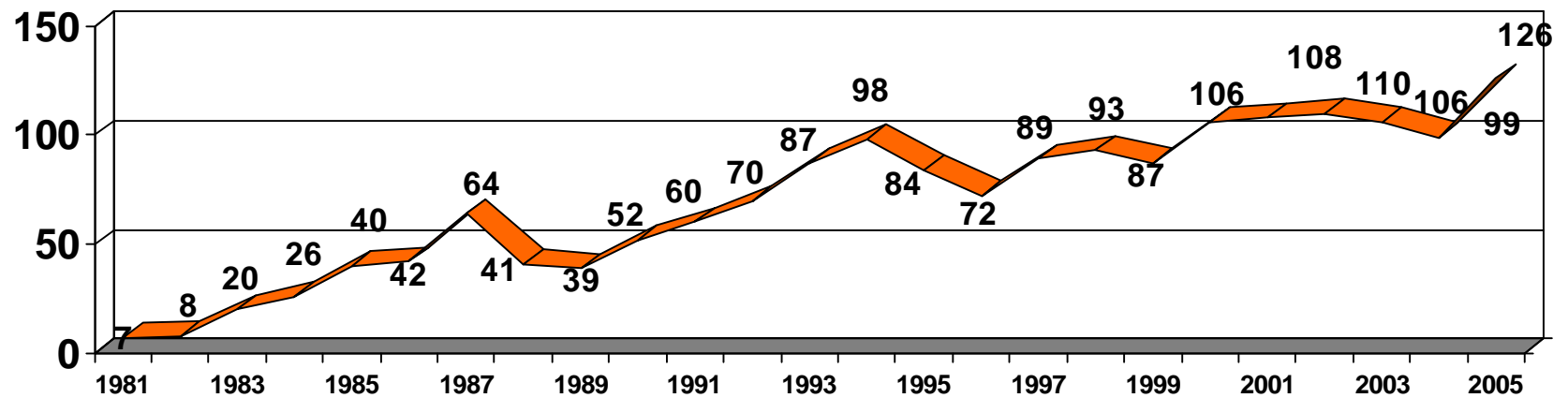
# Grupo sanguíneo de los donantes



# Disponibilidad de recursos riñones 2005



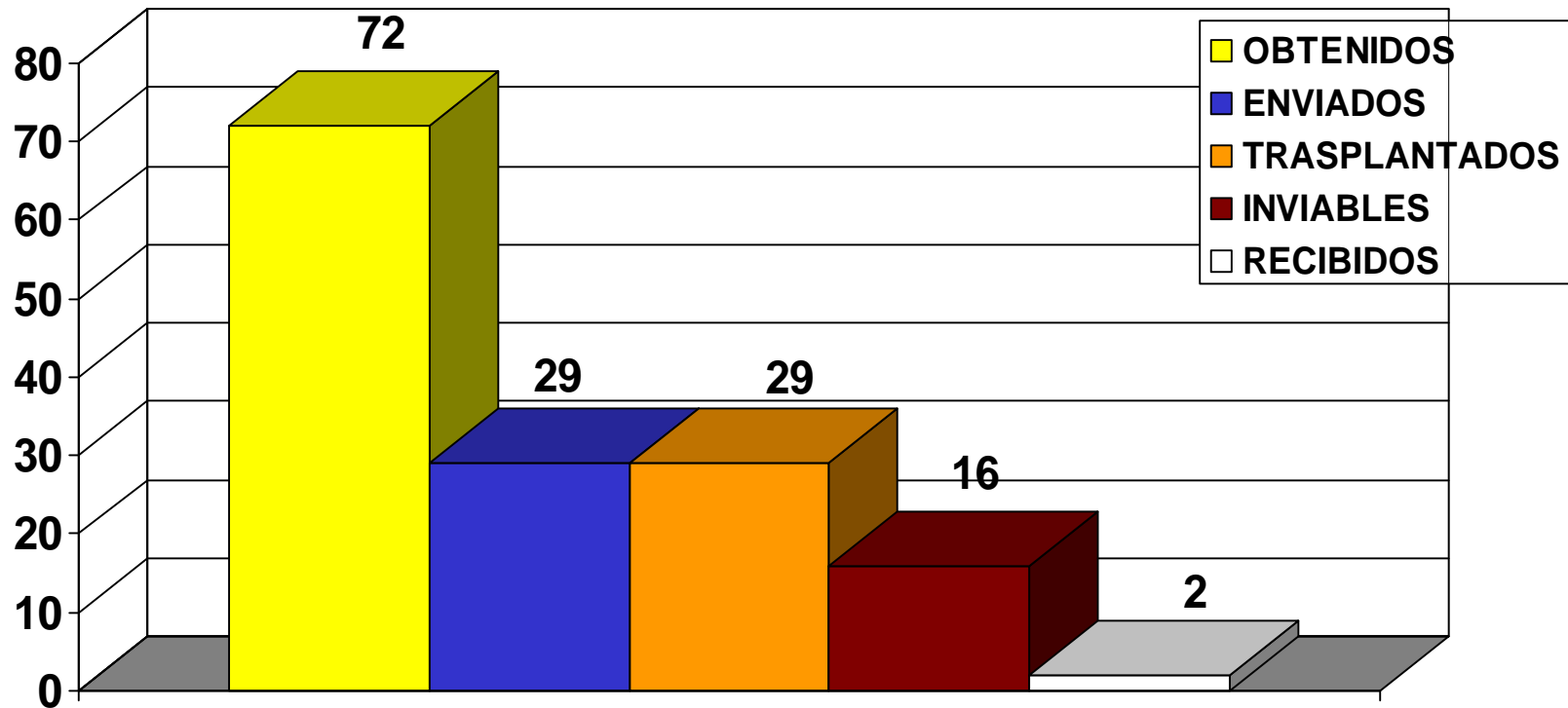
# Evolución del trasplante renal 1981- 2005



Tx. = 64,28 p.m.p.

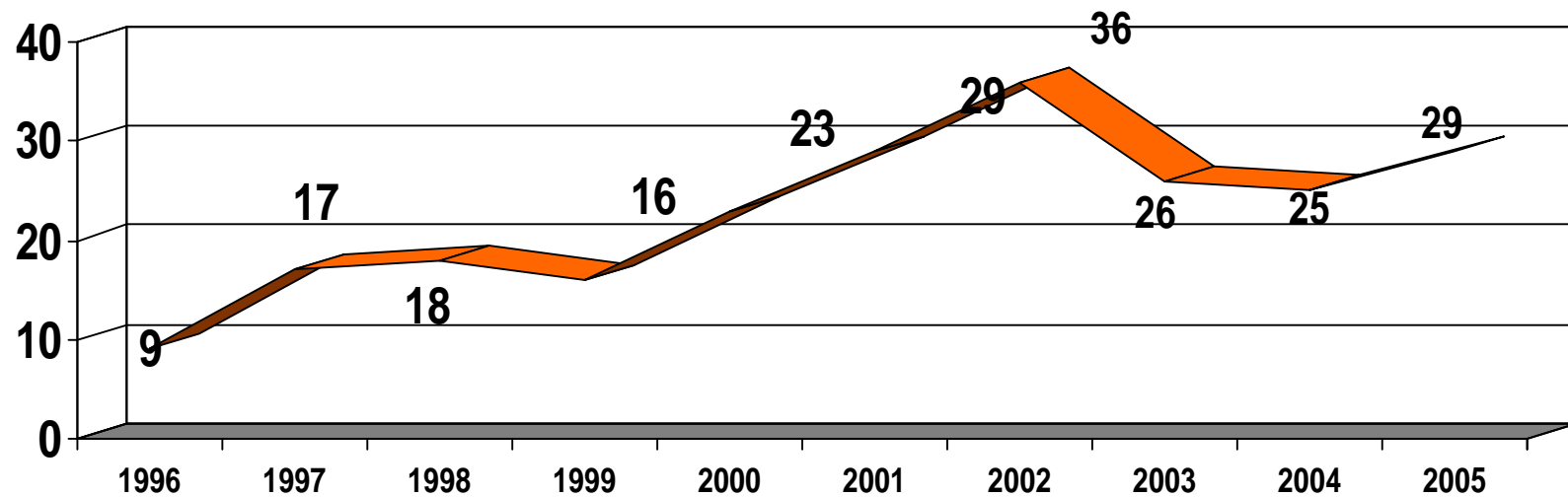
España: 49,8/p.m.p.

# Disponibilidad de recursos hígados 2005



40,2% hígados extraídos

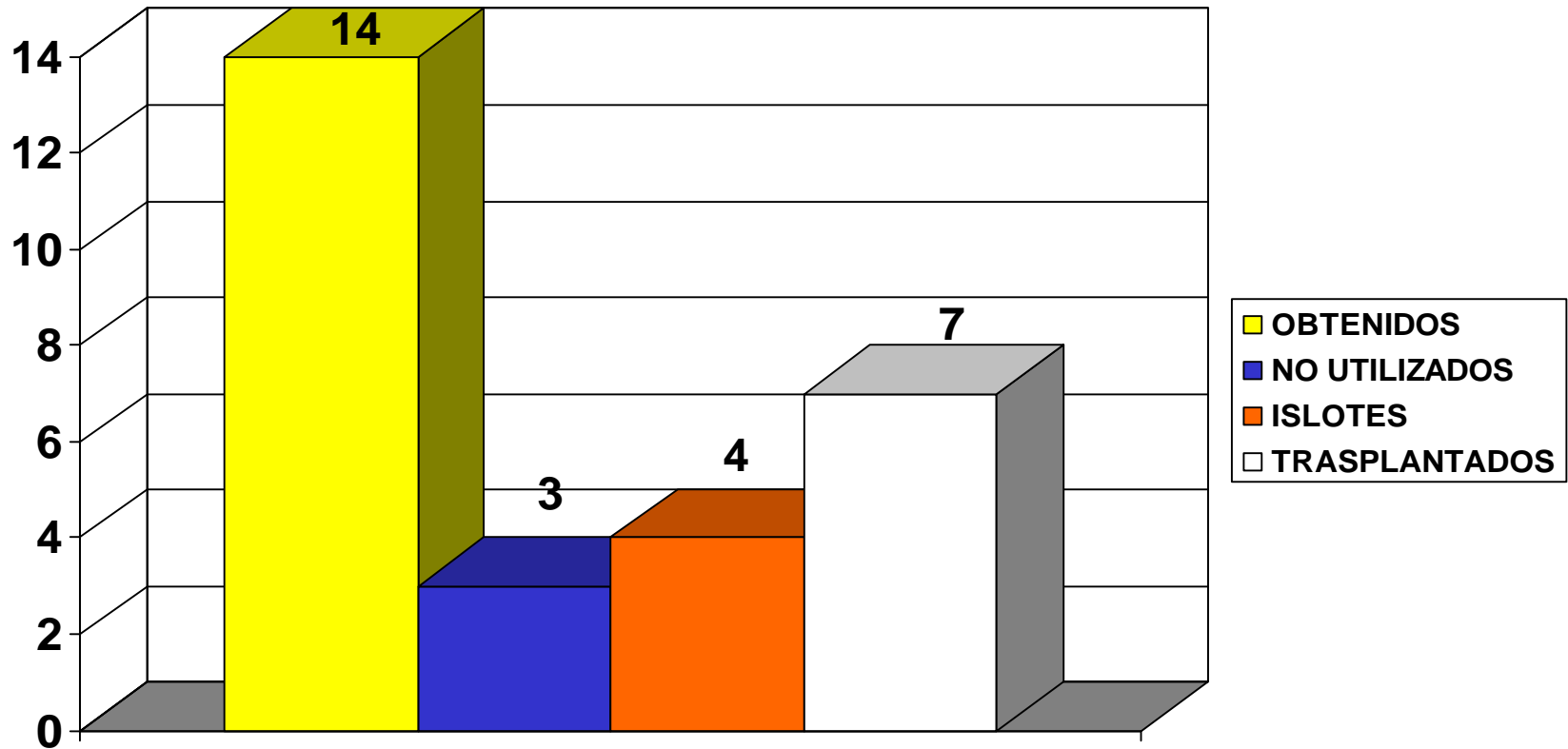
# Evolución del trasplante hepático 1996 - 2005



Tx.= 14,79/p.m.p.

España: 24,26/p.m.p.

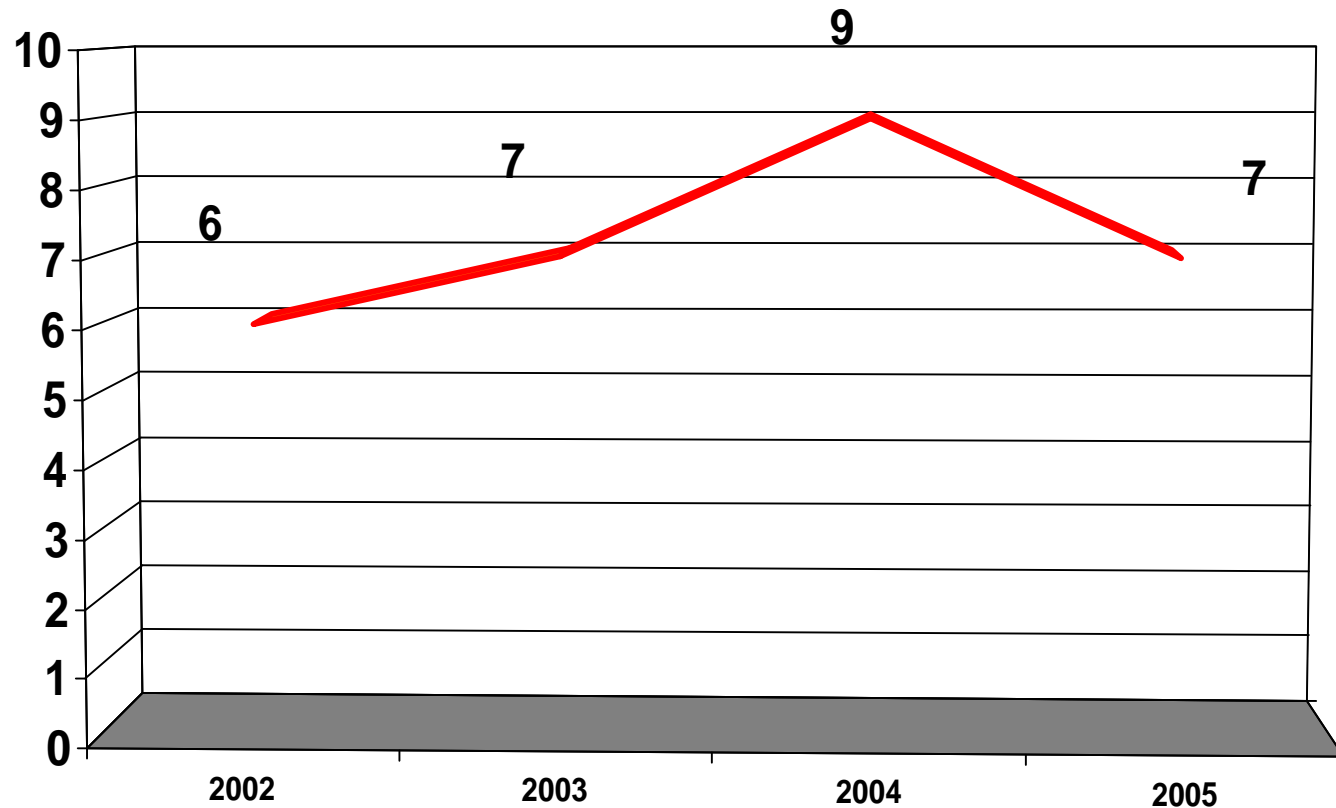
# Disponibilidad de recursos páncreas. 2005



50% de páncreas obtenidos



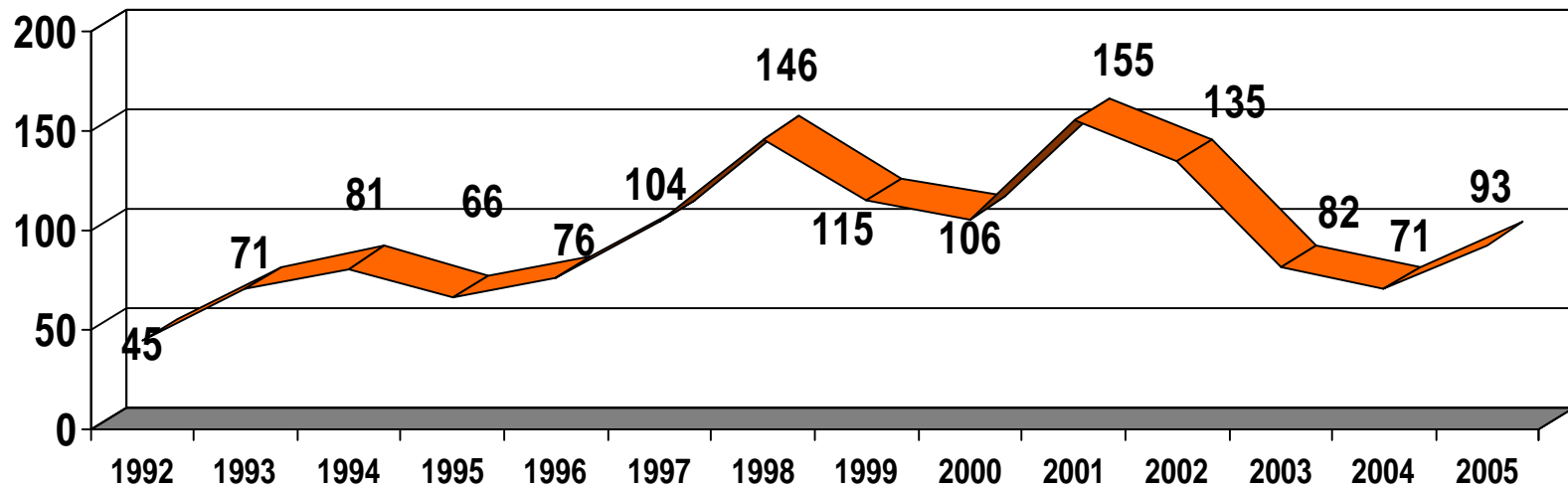
# Actividad del trasplante reno-pancreático 2002 - 2005



Tx. = 3,5 p.m.p.

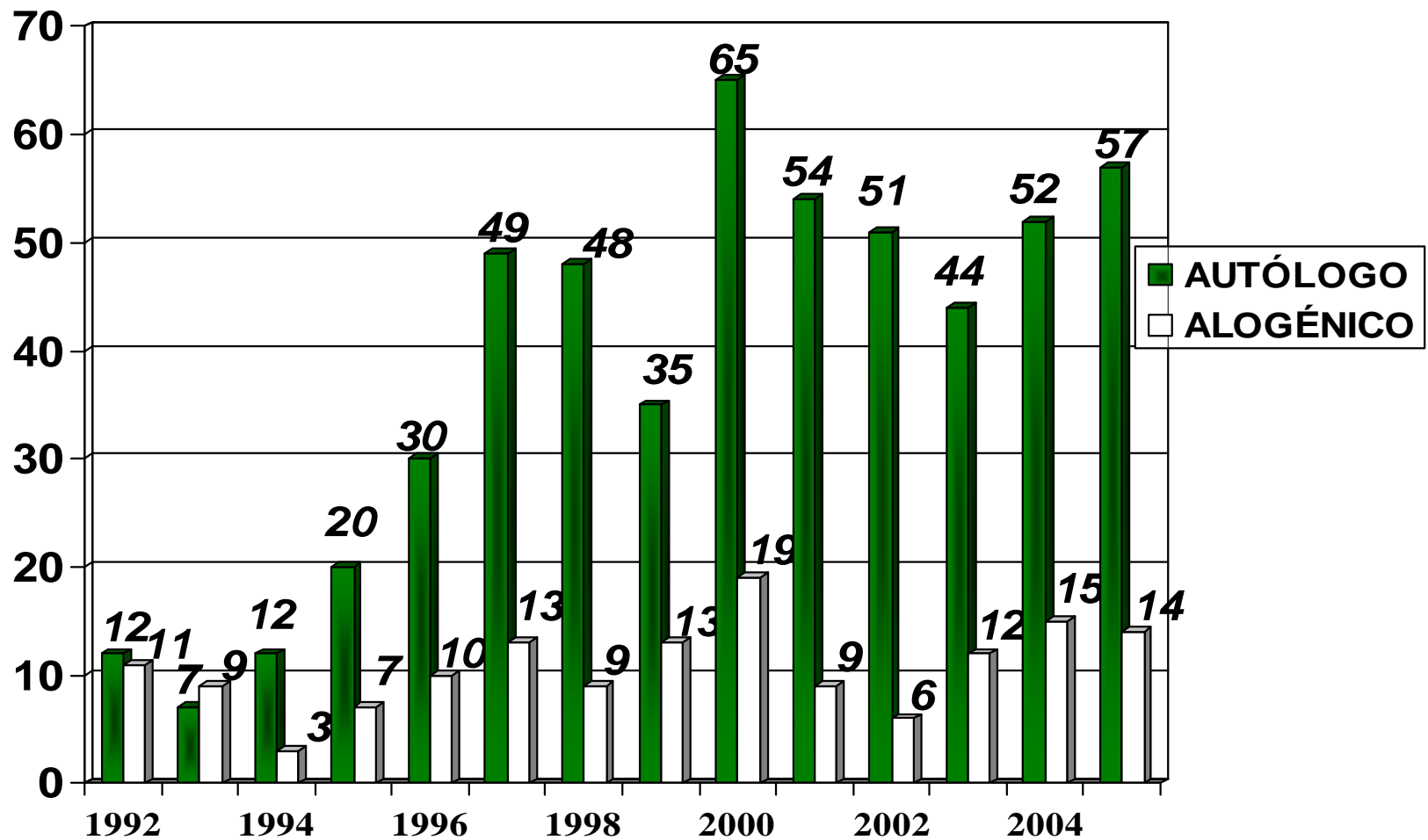
España: 2,1/p.m.p.

# Evolución del trasplante de córneas 1992 - 2005

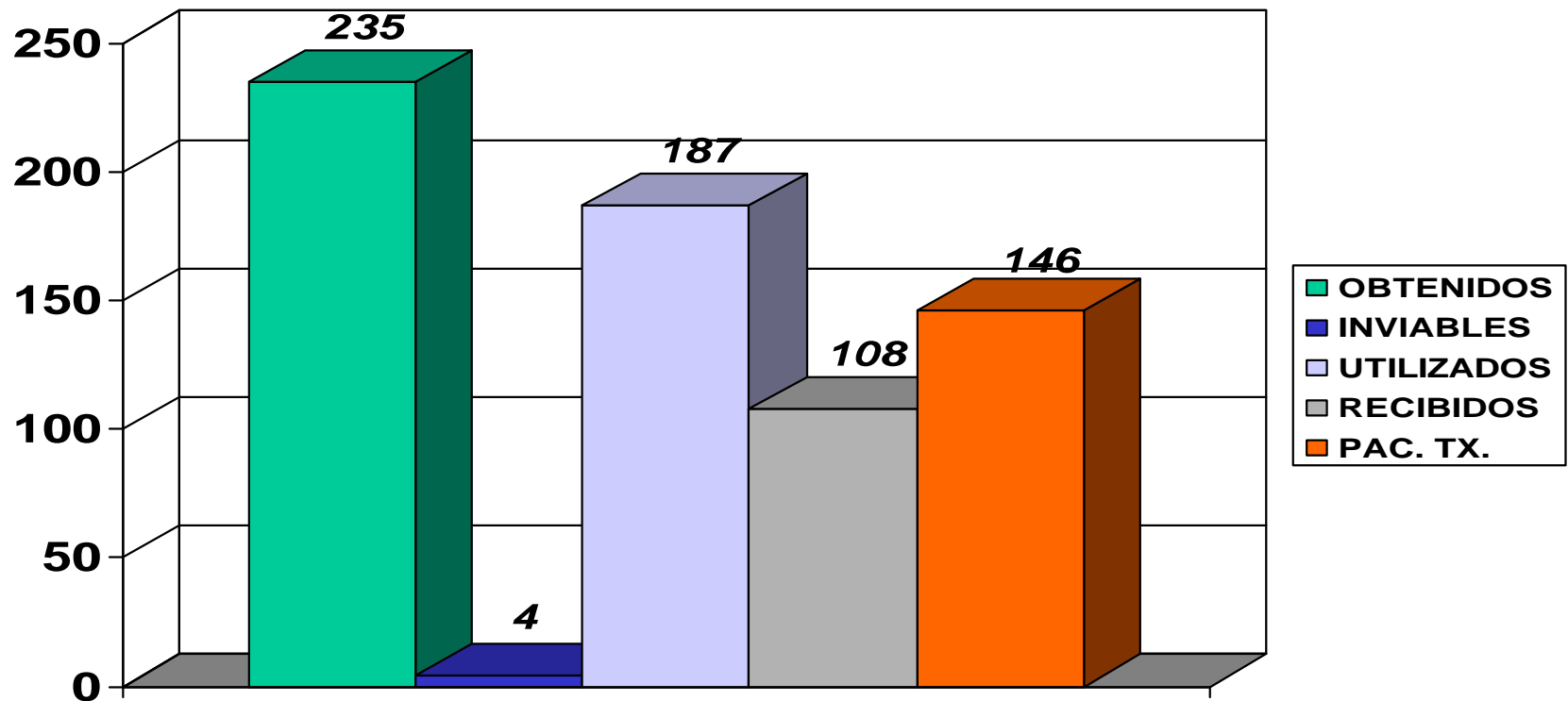


47,4/p.m.p.

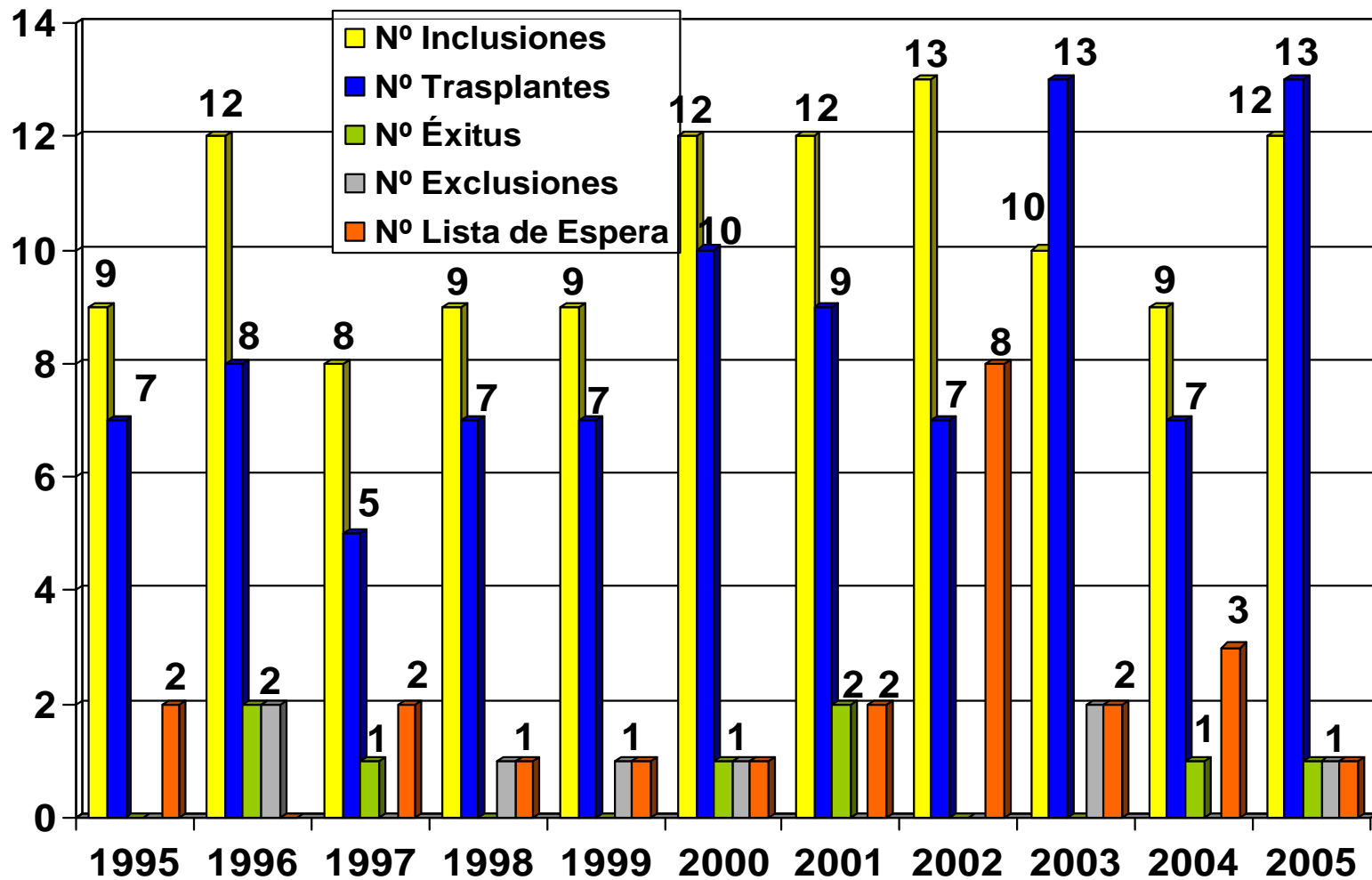
# Evolución del trasplante de médula ósea y progenitores hematopoyéticos 1992 - 2005



# Actividad Ex. y Tx. de tejidos osteotendinosos 2005



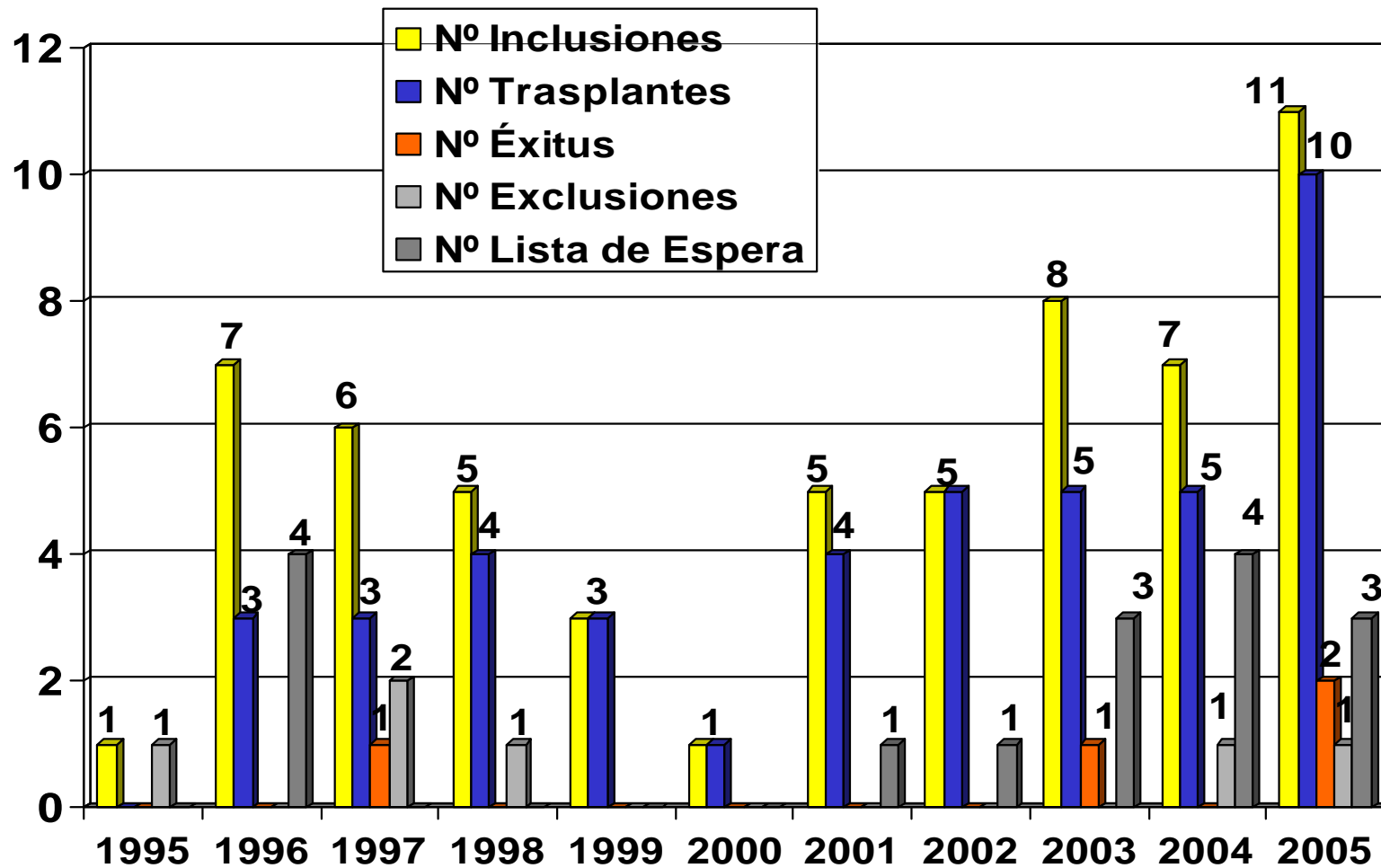
# Evolución del trasplante cardíaco 1995 - 2005



Tx : 6,6/p.m.p

España : 6,5/p.m.p

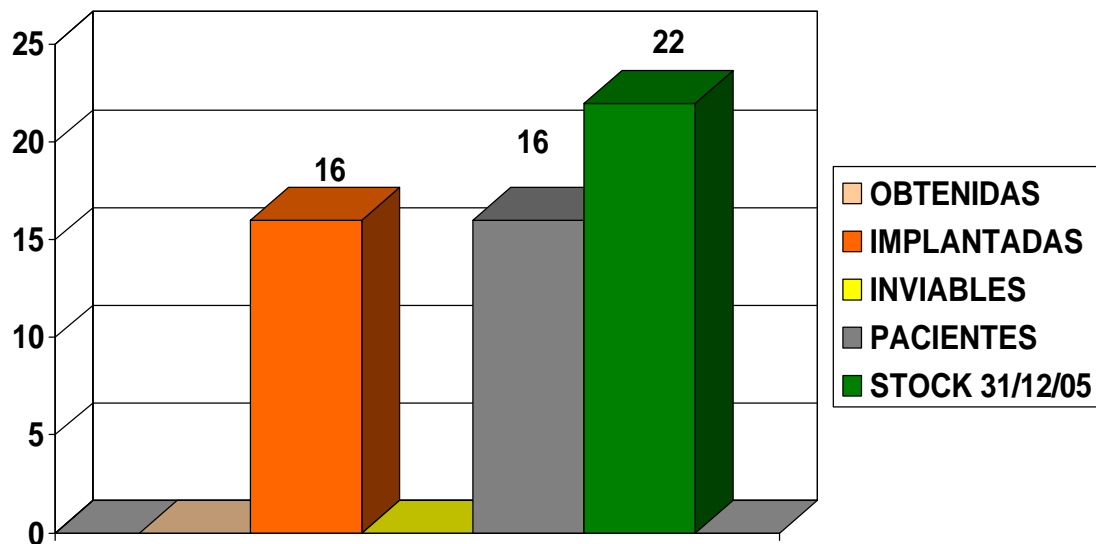
# Evolución del trasplante pulmonar 1995 - 2005



Tx : 5,05/p.m.p

España: 3,78/ p.m.p

# Actividad de Banco e Implante de Tejidos 2005



Membrana amniótica

Extraídas	→	94 u.
Procesadas	→	18 u.
Total s.c.u. en banco		395 u.

S.Cordón Umbilical

HUC

# Pacientes en espera

	2002	2003	2004	2005
<b>RIÑÓN</b> →	103	139	180	151
<b>HÍGADO</b> →	4	8	3	6
<b>PULMÓN</b> →	1	3	4	3
<b>CORAZÓN</b> →	8	2	3	1
<b>CÓRNEAS</b> →	57	71	81	128
<b>Riñón/Páncreas</b> →	1	6	7	9